

# POLY CART LINE

**REVOLUTIONIZING  
HOSPITAL EFFICIENCY!**

- ✓ MODERN DESIGN
- ✓ ANTIMICROBIAL
- ✓ 100% POLYMER
- ✓ CUSTOMIZATION
- ✓ MODULARITY





# FLYING FAR WITH UNMATCHED INNOVATION



**ANESTHESIA CART**



**CRASH CART**



**PEDIATRIC CART**



**ISOLATION CART**



**IT MULTI-PURPOSE CART**



**IT LAPTOP CART**



**IT MEDICATION CART**



**IT PROCEDURE CART**

## 4 DIFFERENT COLORS



PLY41-44449-BB



PLY41-44449-RR

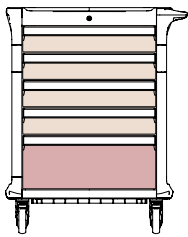


PLY41-44449-GY

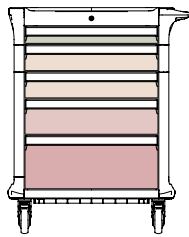


PLY41-44449-GG

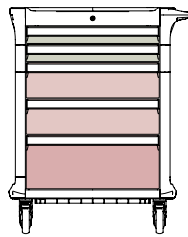
## VARIETY OF DRAWERS CONFIGURATION



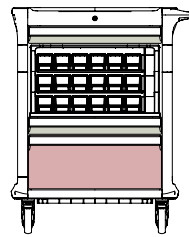
**STANDARD**  
PLY41-44449



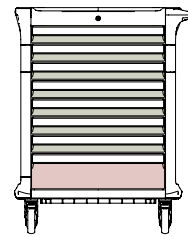
**IT STANDARD**  
PLY41-34469



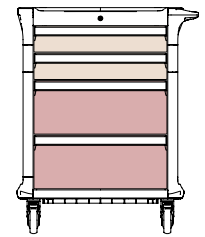
**USA STANDARD**  
PLY41-33669



**MEDICATION CART**  
PLY41-3C39



**PEDIATRIC CART**  
PLY41-3333336



PLY41-4499

## A WIDE RANGE OF ACCESSORIES

Side - Rail needs to be ordered (PLY-SRAIL)

Back - Needs to be ordered in advance



**SIDE BASKET**  
SBASKET



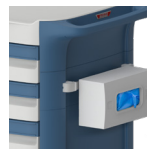
**WASTE BASKET**  
WSB-CRT



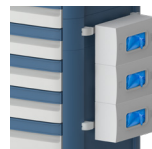
**HAZARD BIN**  
HAZ-BIB-H



**SIDE CATHETER BOX**  
CRTA-CATH-HLD



**SINGLE GLOVE HOLDER**  
S-GBH-ABS



**TRIPLE GLOVE HOLDER**  
TR-GBH-ABS



**BOTTLE HOLDER**  
DLBH-PP



**ADJUSTABLE OXYGEN CYLINDER HOLDER**

OXBH-KIT



**CARDIAC BOARD**  
PLY-CARBACKB

Top - Pole Kit needs to be ordered (PLY-POLE-KIT)



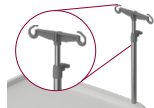
**DEFIBRILLATOR ARM**  
PLY-SDIFARM



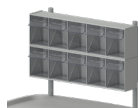
**LAPTOP ARM**  
PLY-LTH



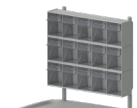
**VESA ARM**  
PLY-VESA



**IV POLE**  
PLY-IVPOLE



**TILT-BIN HOLDER**  
PLY-TBL-2



**TILT-BIN HOLDER**  
PLY-TBL-3



**ALL IN ONE ARM**  
PLY-AIO-HLD

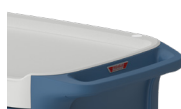


**SHELF**  
PLY-FSHLF-VF

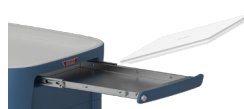
Integrated - Needs to be ordered in advance



**NO HANDLE SMALLER FOOTPRINT**  
PLY-PH-R/L



**PUSH HANDLE**  
PLY-PH-R/L



**LAPTOP DRAWER**  
PLY-SLSD



**KEYBOARD DRAWER**  
PLY-SLSD



**STAINLESS-STEEL PUSH TO OPEN HEAVY LOAD CAPACITY SHELF**  
PLY-SSHFLF-R/L

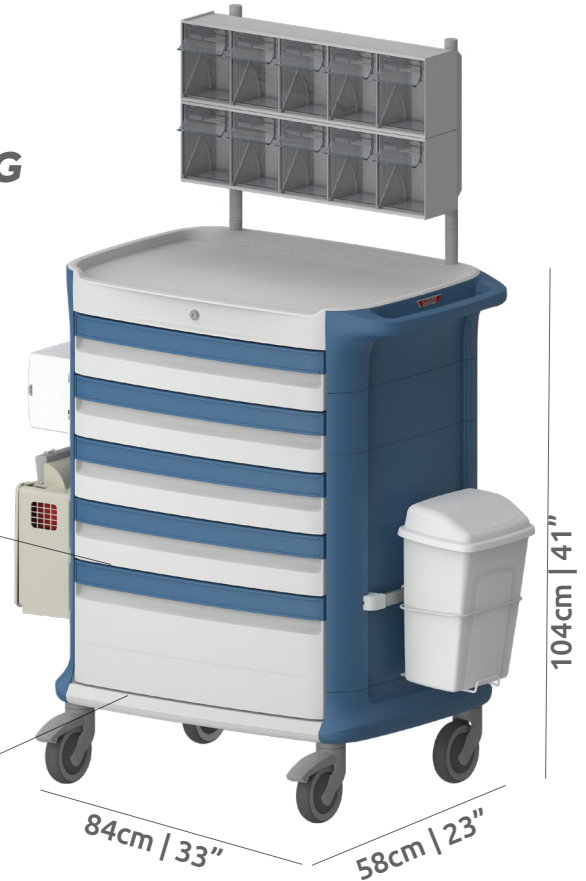
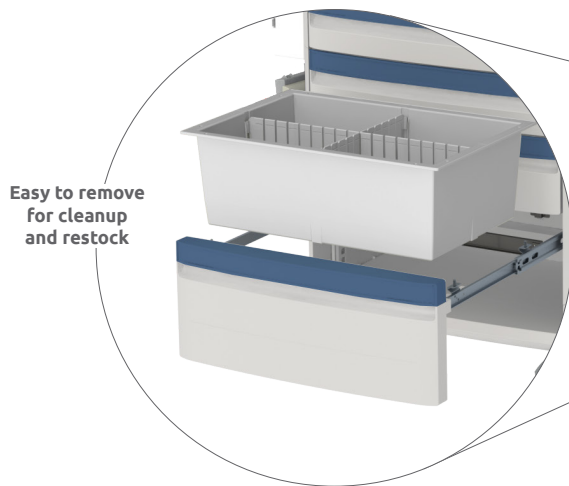
**FOR MORE INFORMATION AND QUOTES, CALL US NOW**

**888-276-4750**

# POLY LINE PROCEDURE & MEDICATION CARTS

## THE CUTTING EDGE OF MEDICAL CARTS

- ✓ 100% ANTIMICROBIAL POLYMER
- ✓ MODULARITY
- ✓ LIGHTWEIGHT, YET STRUCTURALLY STRONG
- ✓ HIGH CLEANING RESISTANCE
- ✓ ISO 3394 SUITABLE
- ✓ IT ACCESSORIES SUITABLE



### 3 HEIGHTS



### 3 TYPES OF WHEELS



### 6 TYPES OF LOCKS

